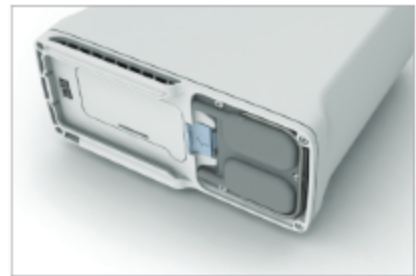


## Inogen One® G4 Column Change Procedure

**NOTE** Column change instructions are only to be used when maintenance is required and are not intended for practice purpose.

1. Turn off the Inogen One® G4 concentrator by pressing the power button to shut down the device.
2. Remove the Inogen One® G4 concentrator from the carry case, if applicable.
3. Remove the battery from the Inogen One® G4 concentrator.

4. Place the Inogen One® G4 concentrator on its side so that the underside is visible. The metal column assembly can be seen on one side of the device.

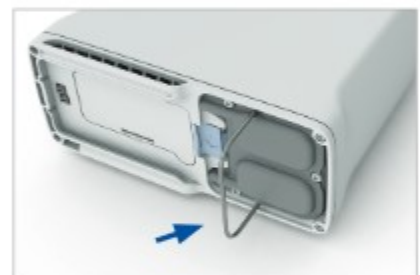


5. Unlock the column assembly by pushing the latch button away from the columns.

Open and unlocked



6. While holding the button open, slide the column assembly out of the device by pulling on the column pull handle.





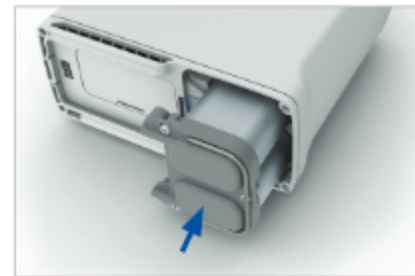
7. Remove the columns completely from the Inogen One® G4. Both columns are removed as one piece.



## Cleaning, Care and Maintenance Chapter 6

### Column (metal tube) Installation

8. Remove dust caps of new column assembly. Make sure there is no dust or debris where the dust caps were located.
9. Insert column assembly into the Inogen One® G4 concentrator. Do not leave the column ends exposed; column assembly should be inserted into the Inogen One® G4 as soon as the dust caps have been removed.
10. Push the column assembly into the device such that the columns are fully seated into the Inogen One® G4 concentrator. The spring loaded latch button should fully return to the closed position.
11. Connect the AC power supply cord to the Inogen One® G4 and plug the power supply AC cord into an electrical outlet. Do Not Power on the Inogen One® G4 concentrator.
12. Press and hold the plus (+) and (-) minus button for 5 seconds. The screen will display "sieve reset" message. Release button once message is displayed on screen.
13. Press the alert  button once and screen will display "sieve reset success".
14. Press the power  button to turn on the Inogen One® G4, and use normally.



### Closed and locked



## Cleaning, Care and Maintenance Chapter 6



**WARNING** Do not use any columns other than those specified in this user manual. The use of non-specified columns may create a safety hazard and/or impair equipment performance and will void your warranty.



**WARNING** Do not disassemble the Inogen One® G4 or any of the accessories or attempt any maintenance other than tasks described in this user manual; disassembly creates a hazard of electrical shock and will void your warranty. Do not remove the tamper evident label. For events other than those described in this manual, contact your equipment provider for servicing by authorized personnel.

**CAUTION** Do not use lubricants on the Inogen One® G4 or its accessories.

### Disposal of Equipment and Accessories

Follow your local governing ordinances for disposal and recycling of the Inogen One® G4 and accessories. If WEEE regulations apply, do not dispose of in unsorted municipal waste. Within Europe, contact the EU Authorized Representative for disposal instructions. The battery contains lithium ion cells and should be recycled. The battery must not be incinerated.

### Maintenance Items List

- Inogen One® G4 single battery (model # BA- 400)
- Inogen One® G4 double battery (model # BA- 408)
- Replacement intake particle filters (model # RP- 405)
- Output Filter Replacement Kit (model # RP-404)
- Inogen One® G4 columns (model # RP-406)

For assistance, if needed, in setting up, using, maintaining, or to report unexpected operation or events, contact your equipment provider, or manufacturer.