

3 Setup

3.1 Unpacking

1. Check for any obvious damage to the carton or its contents. If damage is evident, notify the carrier or your local dealer.
2. Remove all loose packing from the carton.
3. Carefully remove all the components from the cartons. The Invacare concentrator's packaging contains the following items (as shown below) in addition to this user manual. If any parts are missing, please contact your equipment provider.
 - Concentrator (Model POC1-100B) with carry bag (Model POC1-150) installed
 - Cannula (Westmed #0194)
 - Two shoulder straps (Part Number 1187483)
 - Battery (Model POC1-110)
 - AC power adapter (Part Number 1187452)
 - AC power cord (Part Number 1187454 for model POC1-100B)
 - DC power cable (Model POC1-140)



Retain all containers and packing materials for storage or return shipment.

3.2 Inspection

Inspect/examine exterior of the oxygen concentrator and accessories for damage. Inspect all components. If damage is found, DO NOT use concentrator. Contact your provider for service and/or repair or for assistance with the setup procedure and to report unexpected operation or events.

3.3 Powering the Oxygen Concentrator



WARNING!

Risk of Injury or Damage

To avoid injury and damage that will void the warranty:

- Use only Invacare specified power supplies with the oxygen concentrator.
- Prior to using the DC power cable, the automobile (boat, motor home, etc.) engine should be running in order to either operate or charge the oxygen concentrator.



IMPORTANT

The concentrator will not turn on unless the battery is charged.

- Connect AC power to the concentrator and allow battery to fully charge prior to first use.

The oxygen concentrator allows the freedom to choose from the following power sources to enable use both inside and outside of the home:

- Rechargeable battery(s)
- AC power outlet
- 12 volt DC power cable

3.3.1 Installing the Battery(s)



DANGER!

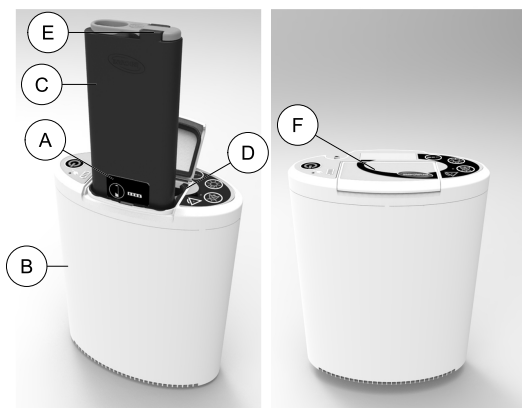
Risk of Death, Injury or Damage

To avoid death, injury or damage from fire:

- DO NOT heat above 140°F (60°C), incinerate, disassemble, or short terminals.
- Dispose in accordance with all local regulations.

The oxygen concentrator comes equipped with a single rechargeable lithium battery. Up to two batteries can be installed in the concentrator. When fully charged, a single battery supplies power for up to five hours, depending on the pulse flow setting. Two batteries can supply power for up to ten hours when fully charged, depending on the pulse flow setting.

A battery can be installed while the concentrator is operating from an external power source or a second charged battery.



1. Open the battery compartment door ⑥.
2. With battery fuel gauge label ① facing toward the front of the oxygen concentrator ②, slowly lower battery ③ straight down into one of the two slots in the battery compartment ④.



Use the lift ring ⑤ to hold the battery while installing it.

The battery will not fit properly in the battery compartment if not oriented as described above.

3. Ensure the battery fully engages the battery connections located at the bottom of the battery compartment. When fully inserted, the top of the battery is level with the top edge of the battery compartment.



CAUTION!

Risk of Damage

To avoid damage to battery connections from excessive force or misuse:

- DO NOT slam or force battery(s) into place.
- Orient the battery(s) as described in the instructions prior to installing.

To avoid damage to the battery door from excessive force or misuse:

- DO NOT lift concentrator using the battery door.
- Make sure battery(s) are fully installed before closing this battery door.
- DO NOT use concentrator with battery door open.

4. If a second battery is being used (sold separately), install it in the same manner in the unoccupied battery slot.
5. Close the battery compartment door ⑥.

3.3.2 Charging the Battery(s)

Initial Charging of the Battery(s)

Using the concentrator for the first time requires the battery(s) to be charged. Batteries are shipped in a “sleep” mode and an initial charge cycle is required to “wake” up the batteries. To charge the battery(s), perform the following steps:

1. Install the battery. Refer to Installing the Battery(s) in Setup.
2. Connect AC power to the concentrator. Refer to External AC Power in Setup.
3. Monitor the battery charge level and charge until full. Refer to Battery Gauge for Installed and Uninstalled Battery(s) in Setup.
4. Disconnect the AC power adapter from the concentrator for portable operation.

! IMPORTANT

- A concentrator will not turn on unless the battery is charged.
 - Connect the AC power to the concentrator and allow battery to fully charge prior to first use.
 - Refer to Specifications in Technical Data for approximate charge times.

Charging the Battery(s) After Initial Charging

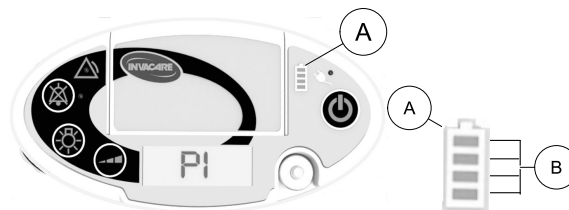


The installed battery(s) can be charged whether the concentrator is on or off.

1. For charging of the battery(s) after initial charging, do one of the following:
 - Connect the AC power adapter (if charging from a wall outlet). Refer to External AC Power in Setup.
 - Connect the DC power cable (if charging from a vehicle). Refer to External DC Power in Setup.
 - Remove battery and charge with the optional External Battery Charger accessory, Model POCI-115.
2. Monitor the battery charge level and charge until full. Refer to Battery Gauge for Installed and Uninstalled Battery(s) in Setup.
3. Disconnect external power from the concentrator for portable operation.

3.3.3 Reading the Battery Gauge for Installed and Uninstalled Battery(s)

Battery Gauge for Installed Battery(s)

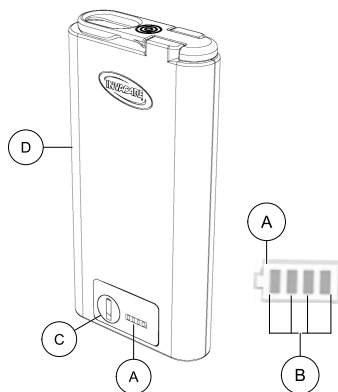


The battery gauge ① shows the status of the installed battery charge level when the concentrator is turned on and when the concentrator is off but connected to an external power source. The number of illuminated segments ② of the battery gauge ① indicates the charge level of the installed battery. If two batteries are installed the indicated charge level is that of the least charged battery.

Number of Lit Segments ②	Charge Level
1	0–25% charge
2	26–50% charge
3	51–75% charge
4	76–100% charge

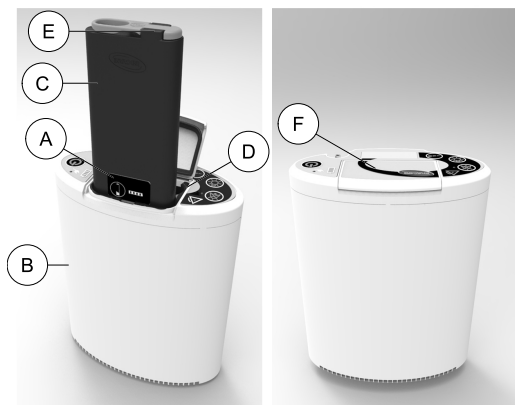
When the concentrator is connected to an external power source (whether the concentrator is turned on or off) the “last” or “highest” segment ⑥ of the battery gauge ① also flashes to show the battery is charging. When the battery is fully charged, the fourth segment ⑥ of the battery gauge ① stops flashing and remains lit.

Battery Gauge for Uninstalled Battery(s)



When the battery ① is removed from the concentrator, press the battery status button ③ to show the status of the charge level on the battery gauge ①. Refer to the charge level ② table in Reading the Battery Gauge for Installed and Uninstalled Battery(s) in Setup.

3.3.4 Removing the Battery(s)



1. Open the battery compartment door ⑥ of the concentrator ②.
2. Pull straight up on the lift ring ⑤ to remove the battery ③ from the battery compartment ④.
3. If a second battery is being used (sold separately), remove it in the same manner.
4. Close the battery compartment door.



A steady audible beep will occur when all power sources are removed from the concentrator. Refer to Shut Down Alarms in Troubleshooting.

A battery can be removed without affecting the operation of the concentrator as long as an external power source or a second charged battery is installed.

4.10 Battery Life and Management

Time away from home is greatly extended by combining the use of the AC power adapter, DC power cable and the concentrator's batteries. To ensure the battery(s) maintain their optimal charge level, utilize the AC power adapter whenever you have access to electric power. Utilize the DC power cable whenever you are in a vehicle.



CAUTION!

Risk of Minor Injury or Discomfort

Battery exhaustion will result in a loss of supplemental oxygen. To ensure proper supplemental oxygen delivery during a power outage:

- Plug your portable concentrator into an alternate power source.
- Have an alternate source of oxygen available that does not require a power source.

What to Do

- **When you first receive your concentrator, fully charge the battery(s) overnight.**
- Keep your battery(s) fully charged when using the concentrator on a daily basis.
- Your concentrator battery(s) can be recharged at any time.
- Always ensure the concentrator battery(s) are recharged as soon as possible after they become fully discharged. The battery(s) may be permanently degraded if left fully discharged for an extended length of time.
- Check the status of your concentrator battery(s) once a month if you are not using your concentrator on a daily basis. Battery(s) should be maintained at two illuminated bars worth of charge if not using the concentrator on a daily basis.

- Heat is the worst enemy of a battery. Allow plenty of air to circulate around the concentrator so that the battery(s) is kept as cool as possible when in use and when charging.

What Not to Do

- DO NOT use or leave the concentrator or battery(s) in excessive heat or cold.
- DO NOT store or leave the concentrator or battery(s) in car trunks, etc. for extended periods of time.
- DO NOT store battery(s) fully charged (four bars illuminated on the unit's battery gauge) if you are going to store your concentrator for any time greater than a day. Recharge or discharge the battery to two bars (50% charge) only. Storing a battery with a full charge may degrade its useful life.
- DO NOT leave your battery(s) installed into the concentrator when the concentrator is not going to be used for more than a day. The battery(s) will lose charge while plugged into the concentrator even with the concentrator turned off.